







A cluster of several red blood cells, depicted as biconcave discs with a reddish-pink hue and a textured surface, arranged in a vertical stack on the left side of the slide. Two more red blood cells are shown floating in the upper right quadrant of the slide.

Het effect van intrauteriene transfusies op foetale reticulocyten en uitkomsten in HZFP

NVB-TRIP symposium 2019

Isabelle Ree

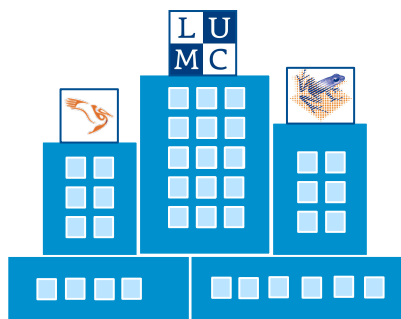
Disclosures

Niet van toepassing.

Hemolytische ziekte van de foetus en pasgeborene (HZFP)



Maternale antilichamen



Screening en verwijzing

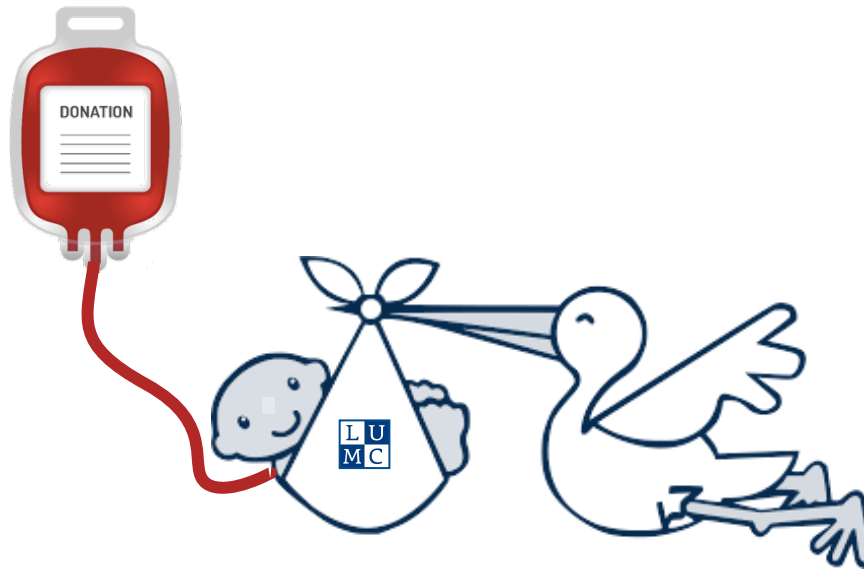


MCA Dopplers



Intrauteriene transfusie

Achtergrond



88% transfusies na IUT

> Lage reticulocyten bij de geboorte

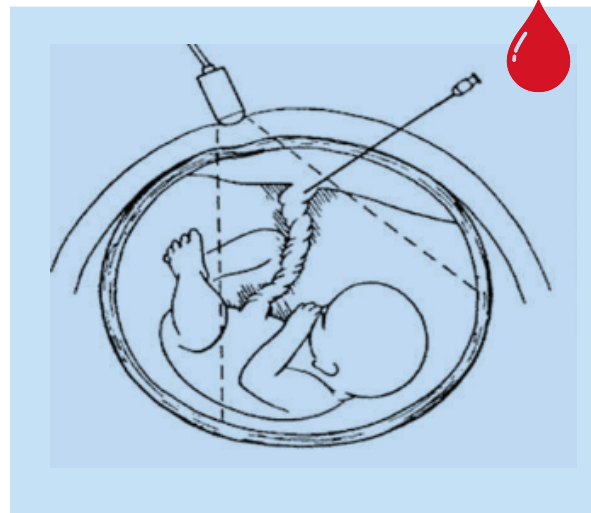
Foetaal reticulocytenbeloop

Klinische uitkomsten

Ree, et al. Br J Haematol 2019.

Methode

- Observationeel
- D gemedieerde HZFP
- Neonaten behandeld met IUT
- 2005-2018
- **n=189**



Foetaal reticulocytenbeloop (1/2)

IUT

1 (n=189)

2 (n=148)

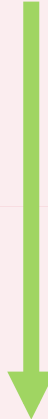
3 (n=89)

4 (n=48)

5 (n=16)

6 (n=3)

Foetaal reticulocytenbeloop (1/2)

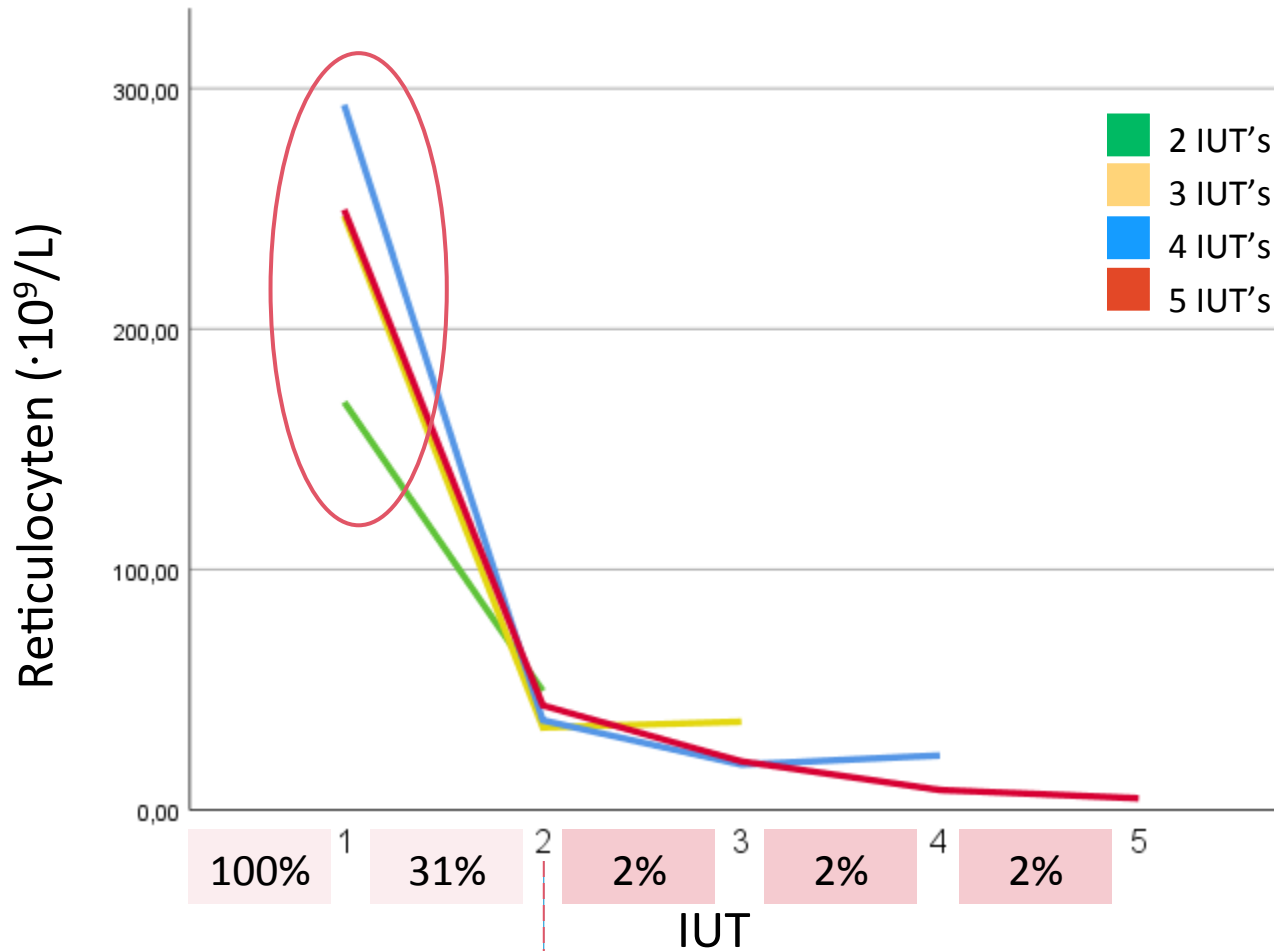
IUT	Amenorroeduur (weken)	Hemoglobine (mmol/L) ¹		Reticulocyten ($\cdot 10^9/L$) ²
1 (n=189)	29 (25-32)	4.3 (3.3-5.3)		297 (239-390)
2 (n=148)	30 (26-33)	4.6 (3.8-5.5)		92 (5-176)
3 (n=89)	31 (29-33)	4.6 (4.0-5.3)		7 (5-143)
4 (n=48)	33 (31-34)	5.0 (4.2-5.5)		5 (4-7)
5 (n=16)	34 (31-34)	5.3 (4.6-6.0)		5 (2-7)
6 (n=3)	34	5.4		5

¹ 17-40 wk: 7 mmol/L  10 mmol/L

² 17-40 wk: $27 \cdot 10^9/L$  $17 \cdot 10^9/L$

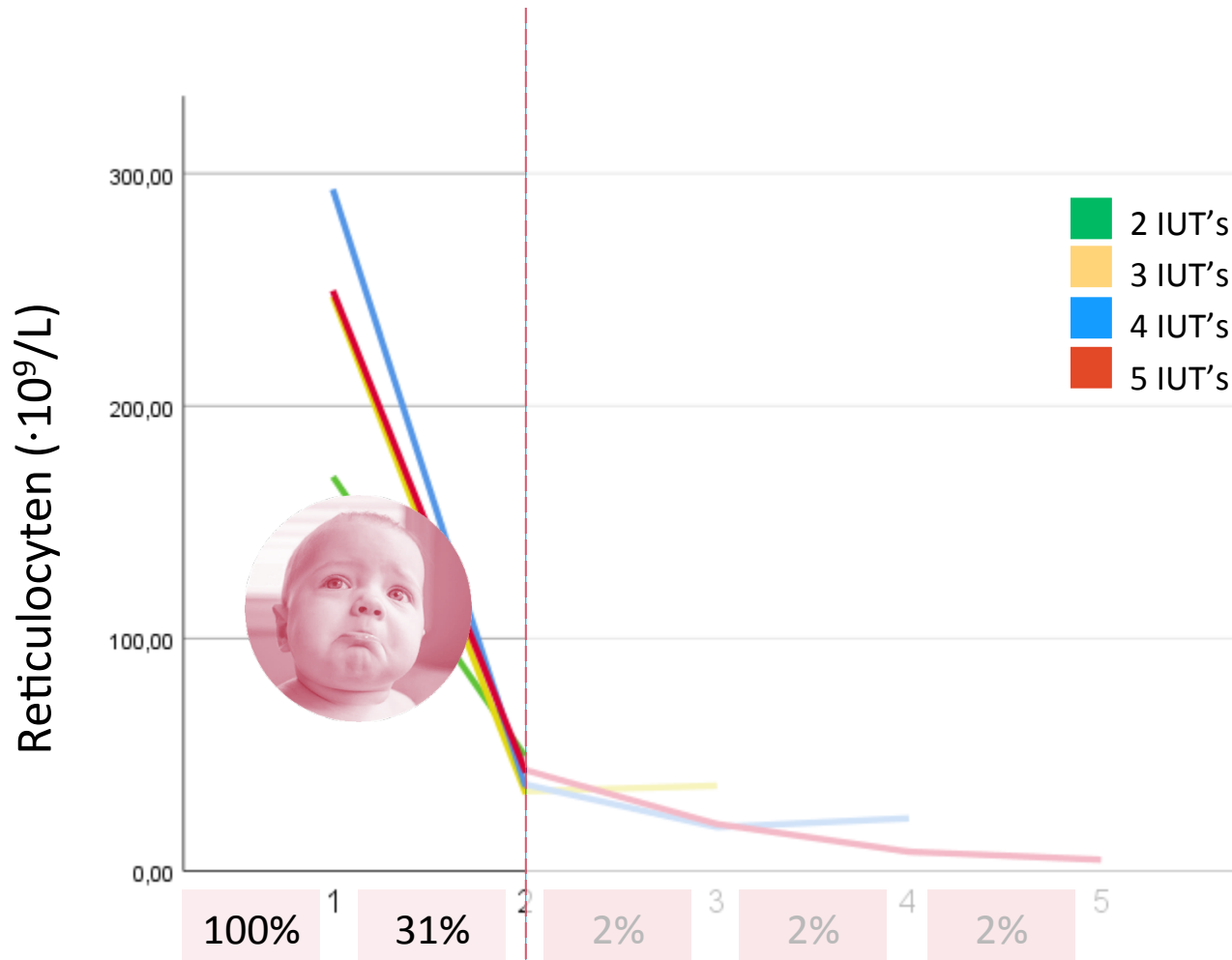
Nicolaidis, 1989.

Foetale reticulocytenbeloop (2/2)

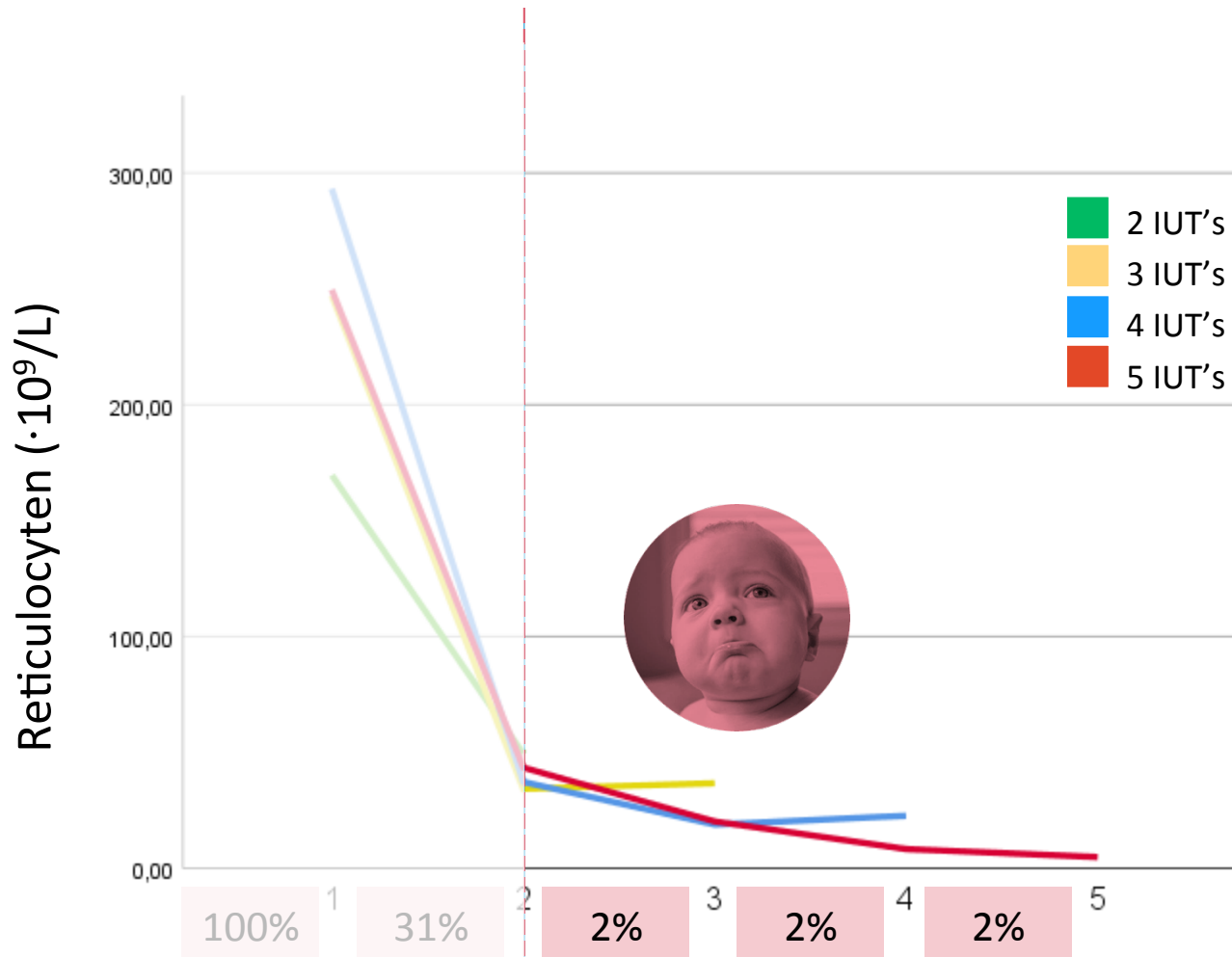


17-40 wk: $27 \cdot 10^9/L \rightarrow 17 \cdot 10^9/L$

Foetale reticulocytenbeloop (2/2)

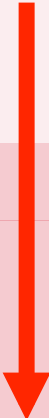


Foetale reticulocytenbeloop (2/2)



Klinische uitkomsten (1/2)

IUT	Amenorroeduur (weken)	Hemoglobine (mmol/L) ¹	Reticulocyten ($\cdot 10^9/L$) ²
1 (n=41)	36 (36-37)	7.4 (6.2-8.6)	140 (8-275)
2 (n=59)	36 (36-37)	7.5 (6.5-8.4)	147 (13-237)
3 (n=41)	36 (35-37)	8.0 (6.7-9.5)	19 (7-148)
4 (n=32)	36 (36-37)	7.9 (7.0-9.1)	14 (9-29)
5 (n=13)	36 (36-37)	7.1 (6.3-7.6)	8 (3-18)
6 (n=3)	37	7.9	10





¹ 40 wk: 10 mmol/L

² 40 wk: $17 \cdot 10^9/L$

Nicolaides, 1989.

Klinische uitkomsten (2/2)

IUT	Wisseltransfusie n (%)		RBC transfusie(s) n (%)	
1 (n=41)	16 (39)		36 (88)	
2 (n=59)	15 (25)		49 (83)	
3 (n=41)	9 (22)		37 (90)	
4 (n=32)	6 (19)		29 (91)	
5 (n=13)	1 (8)		13 (100)	
6 (n=3)	3 (100)		2 (67)	

¹ 40 wk: 10 mmol/L

² 40 wk: $17 \cdot 10^9/L$

Nicolaides, 1989.

Conclusies


Foetale reticulocyten

Exponentiële daling bij meerdere IUT's

Klinische uitkomsten

Bij meerdere IUT's minder wisseltransfusies en meer postnatale RBC transfusies

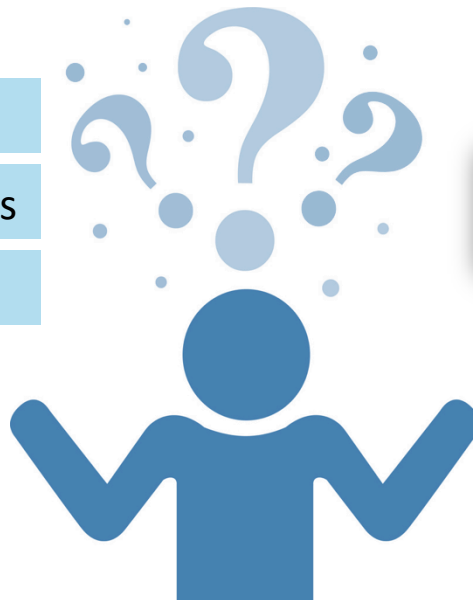
Langdurige onderdrukking van de erythropoëse?



HbF/HbA

Levensduur ery's

Ferritine



EPO 4
Rhesus





Bedankt voor de aandacht!

Het onderzoeksteam:

Masja de Haas



Enrico Lopriore



Carolien Zwiers



Dick Oepkes



Anske van der Bom



Rutger Middelburg

