

Grootschalige kweek en differentiatie van erytroblasten vanuit perifeer bloed mononucleaire cellen.

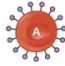









NVB TRIP symposium 2019

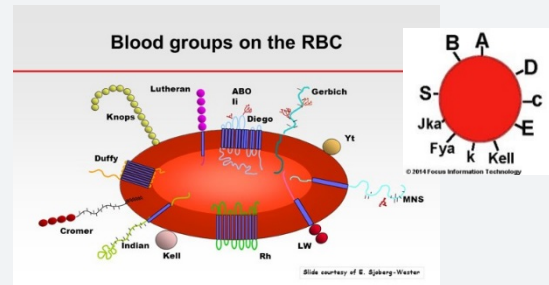
Marie-José Claessen
Onderzoeker in Opleiding, Sanquin Research, Afdeling Hematopoiese
Internist-Hematoloog Amsterdam UMC, locatie AMC

Belangenverstrengeling: geen

Introductie



	Blood Type			
	A	B	AB	O
Red blood cell type				
Isohemagglutinins	 Anti-B	 Anti-A	None	 Anti-A and Anti-B
Antigens on red blood cell	 A antigen	 B antigen	 A and B antigens	None

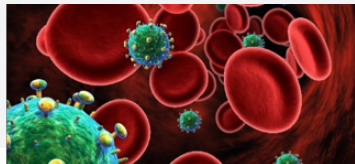
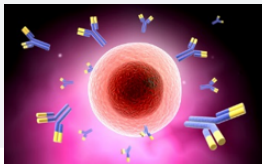


Waarom *in vitro* gekweekte erythrocyten voor transfusie maken?

Voorkomen van transfusie gerelateerde complicaties

Op maat gemaakt / patient gericht RBC

Donatie onafhankelijk



Rode bloedcel concentraten uitgegeven in Nederland ²⁰¹⁵

Totaal	427.685
Specifieke bloedgroep vereist	7291
Onmiddellijk geleverd	6535
Geleverd na aanvullende test	756
Donatie uit cohort van zeldzame donors	180
Frozen blood bank	20

Wat is nodig?

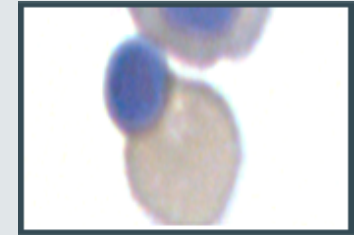
Celkweek protocol (GMP) genereert voldoende cel aantallen

Erytrocyt karakteristieken

Onuitputtelijke bron

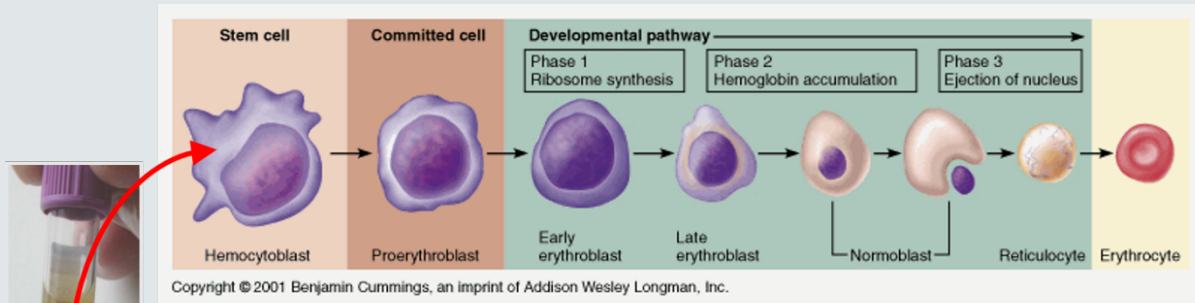
Te individualiseren eindproduct

Afwezigheid van immuunreacties



Enucleatie erythroïde cel

Productie cRBC van PBMC: Expansie fase



Expansion



EPO

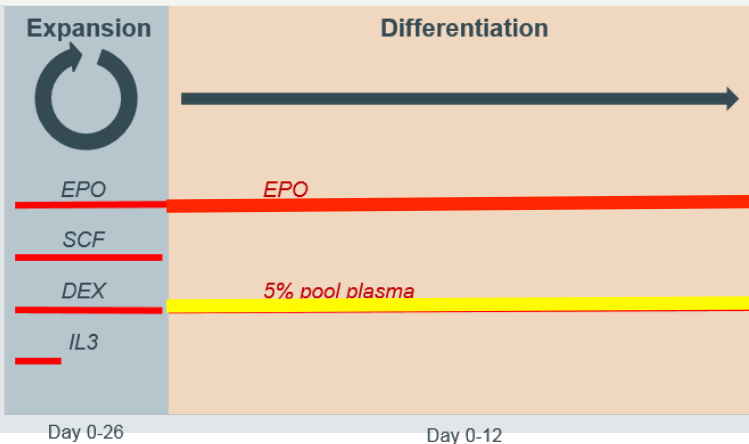
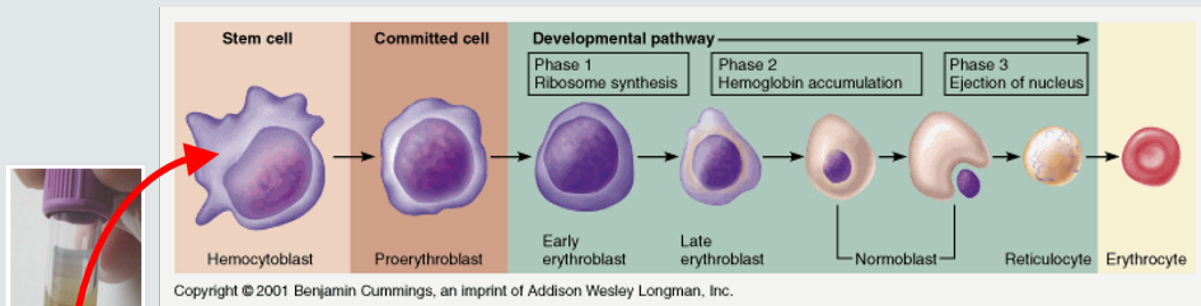
SCF

DEX

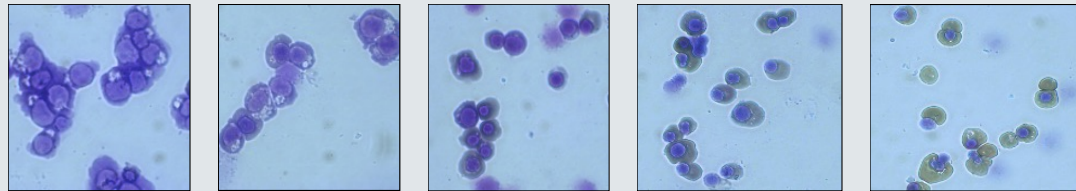
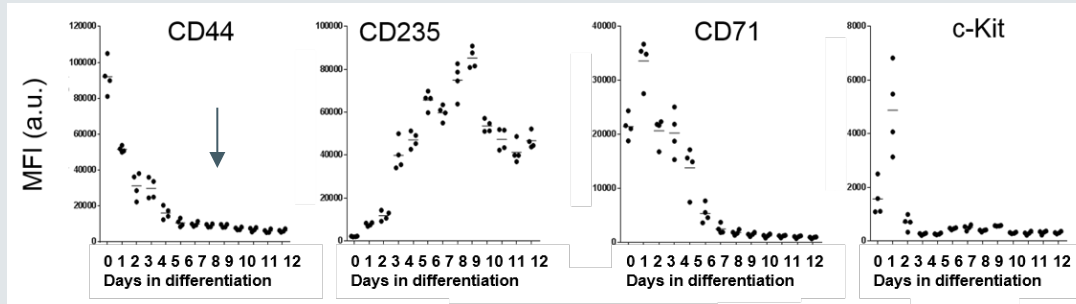
IL3

Day 0-26

Production van cRBC uit PBMC: Differentiatie fase



Productie van cRBC uit PBMC: Differentiatie fase



Pro-erythroblast

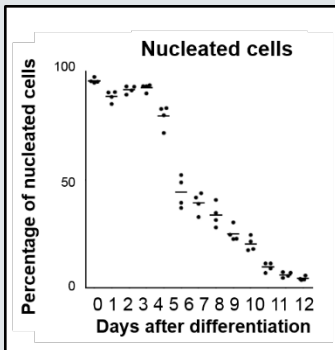
Basophilic normoblast

Polychromatophilic normoblast

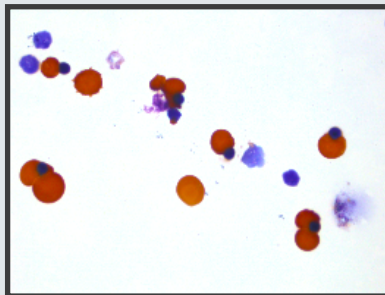
Orthochromatic normoblast

Reticulocyte

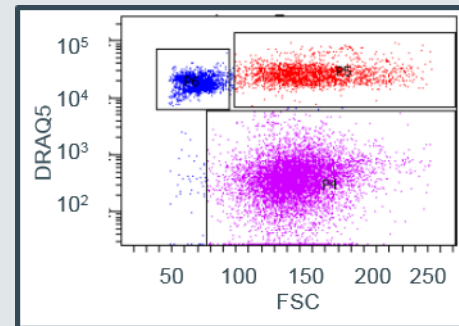
Enucleatie efficiëntie > 90%



> 95% enucleatie



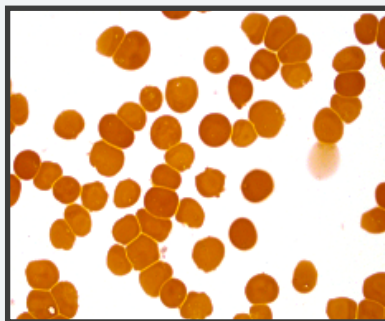
Cytopsin voor filtratie: terminaal gedifferentieerde cellen laten voornamelijk geënuceerde reticulocyten zien.



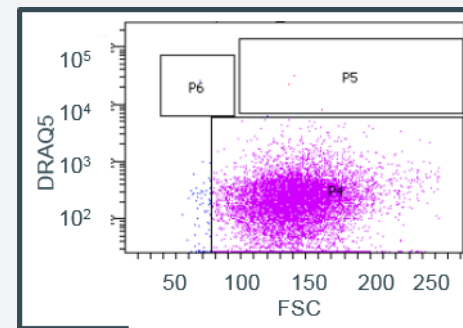
FACS plot voor filtratie, geënuceerde reticulocyten.



Voorbeeld van een leukocyten depletie filter

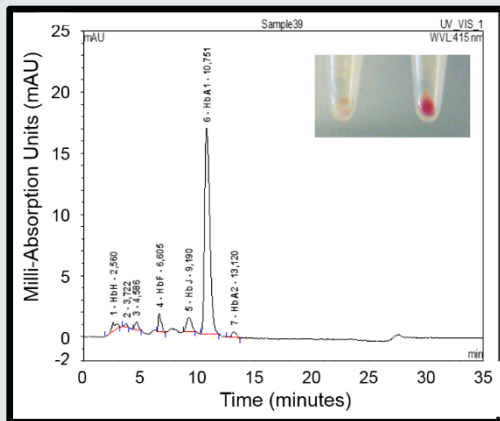


Cytopsin na filtratie: terminaal gedifferentieerde cellen laten voornamelijk geënuceerde reticulocyten zien.

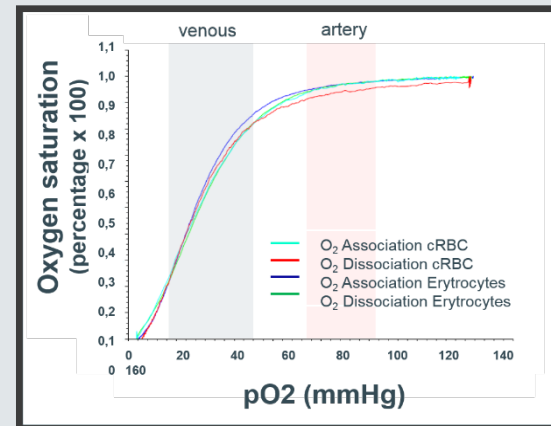


FACS plot na filtratie, geënuceerde reticulocyten

cRBC functionele parameters: Hb | Zuurstof associatie/dissociatie



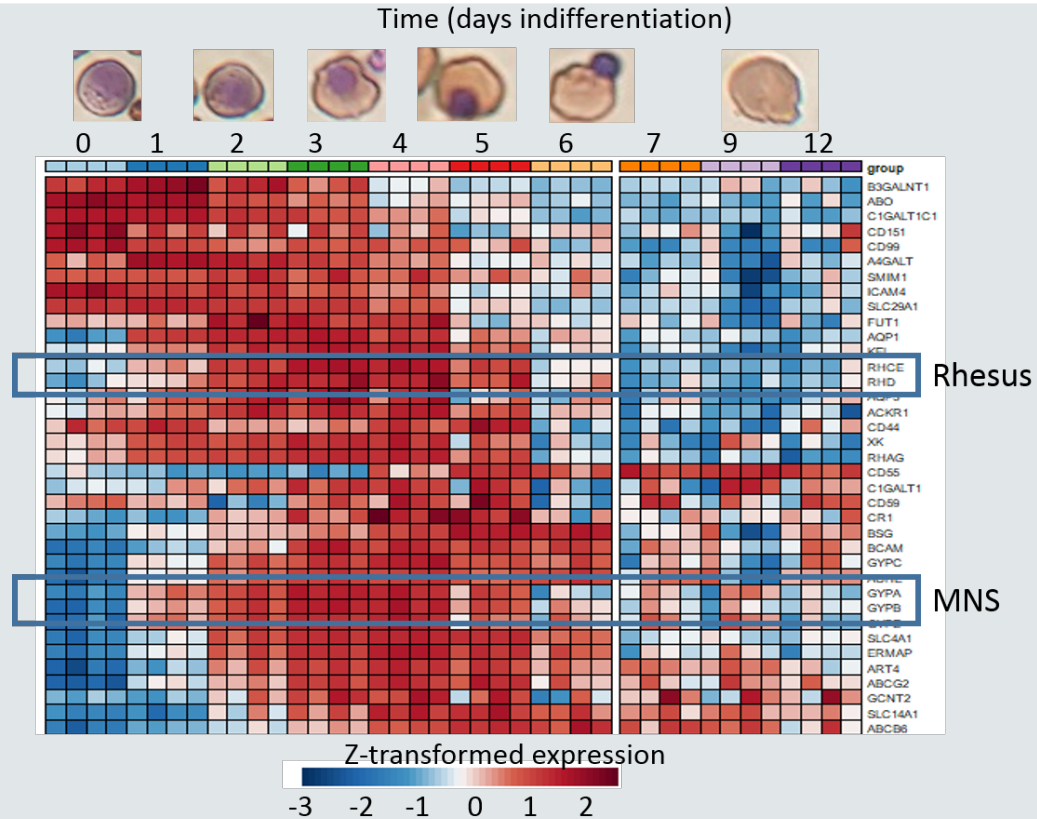
Expressie van voornamelijk adult hemoglobine in differentierende erytroblasten



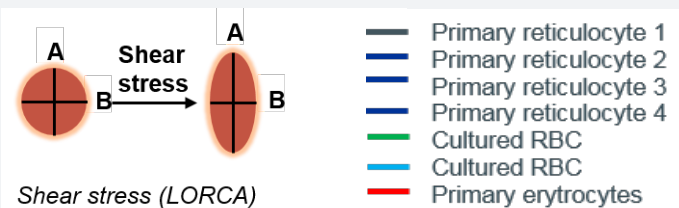
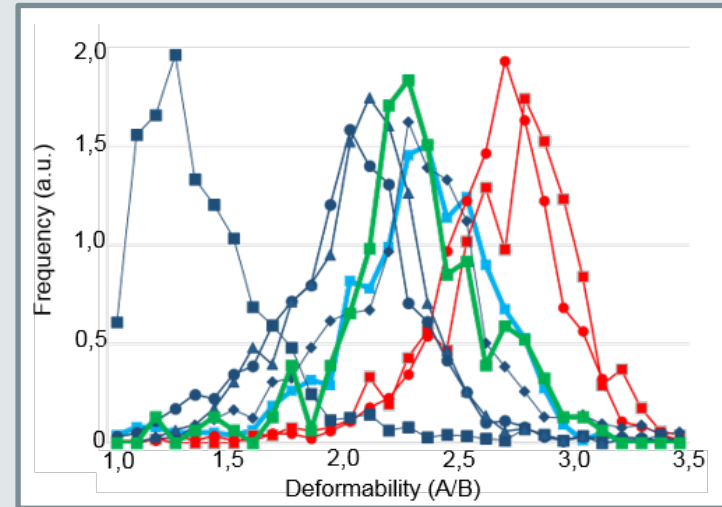
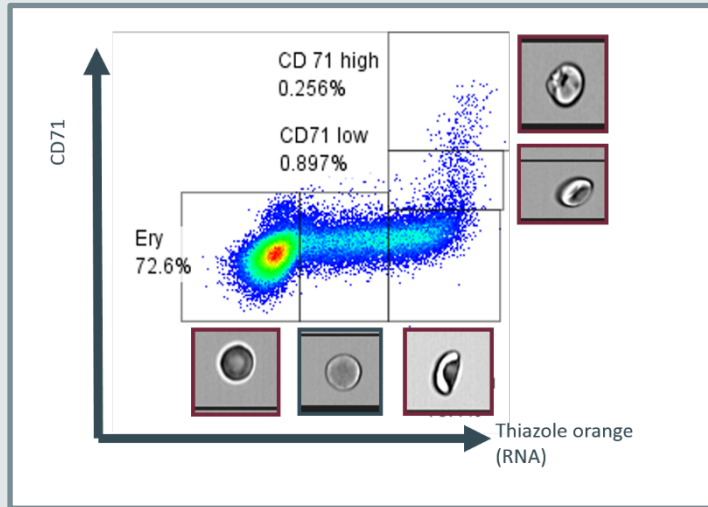
Identieke Zuurstof associatie/dissociatie curves cRBC en pRBC

	A	B	D	C	c	K	k	Kp-a	Kp-b	Fy-a	Fy-b	Jk-a	Jk-b	Lu-a	Lu-b	P1	M	N	S	s	2C3	
39	+	-	+	+	+	+	+	-	+	+	-	+	-	-	+	+	+	-	+	+		
66	-	+	+	+	+	-	+	-	+	+	+	+	+	-	+	+	+	+	+	+	+	

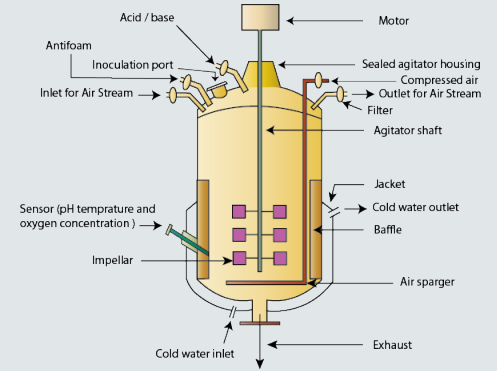
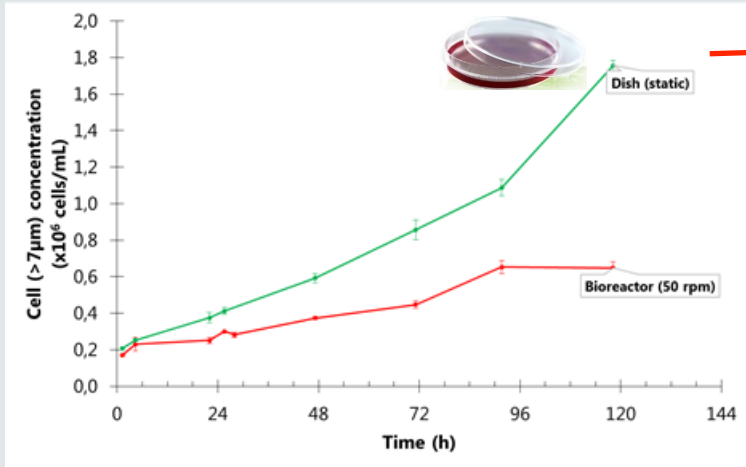
cRBC: Differentiële expressie RNA gedurende differentiatie



cRBC functionele parameters: Vervormbaarheid



Bioreactor

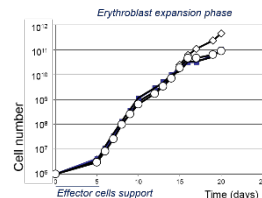


SCEVAT

Survival of Cultured Erythrocytes in healthy Volunteers after Autologous Transfusion

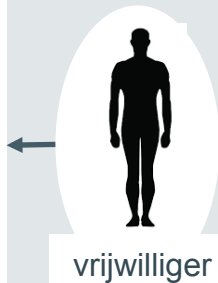
Productie (2)

Expansie erythroblasten uit (PBMC) en differentiatie tot geënuceerde reticulocyten.



Collectie (1)

PBMC's uit bloed donatie

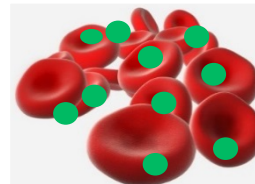


Infusie (4)

cRBC infusie in vrijwilliger

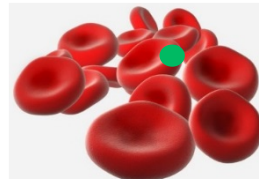


Labellen gekweekte reticulocyten (3)



Tijdpunt analyse (5):

- Veiligheid
- Overleving cRBC



Dank!

Afdeling Hematopoiese

Erica Sellink
Marijke Thiel
Joan S Gallego Murillo
Francesca Aglialaro
Steven Heshusius
Marten Hansen
Thomas Klei
Eszter Varga
Emile van den Akker
Marieke von Lindern

Project comité:

R.A.W. van Lier
C.E. van der Schoot
M. de Haas
R. Van Bruggen
J.G. van der Bom
D. de Korte
M. Van Kraaij

Vrijwillige bloed donoren Sanquin bloed bank



Marie José Kersten



Anna Rita Migliaccio



Ashley M. Toye
Stephanie Pellegrin
Tim Satchwell



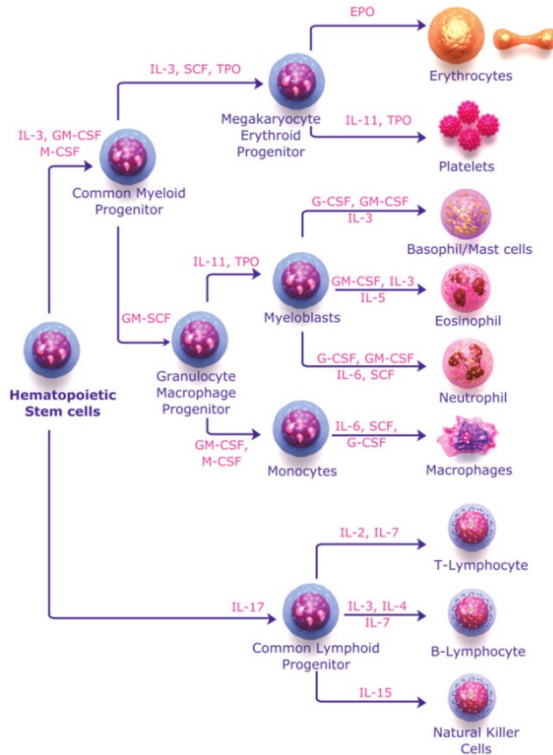
Thamar van Dijk
Sjaak Philipsen



Luz Naranjo Gomez
Loren Paz Saavedra
Luuk van der Wielen
Maria Cuellar Soares

Sponsors:





SCEVAT trial Survival of Cultured Erythrocytes in healthy Volunteers after Autologous Transfusion

Sanquin

Blood red
Consisting of or relating to blood

Sanguine

Optimistic or positive, especially in an apparently bad or difficult situation

Hematopoiesis:

from Greek αίμα, "blood" and ποιειν "to make";
Is the formation of blood cellular components

Inspiration / drive

We make blood cellular components to make a positive contribution in a
difficult situation