

Kennisplatform Transfusiegeneskunde Zuidoost Nederland: Casuïstiek

TRANSFUSIE PERIKELEN BIJ SIKKELCELPATIËNTEN:

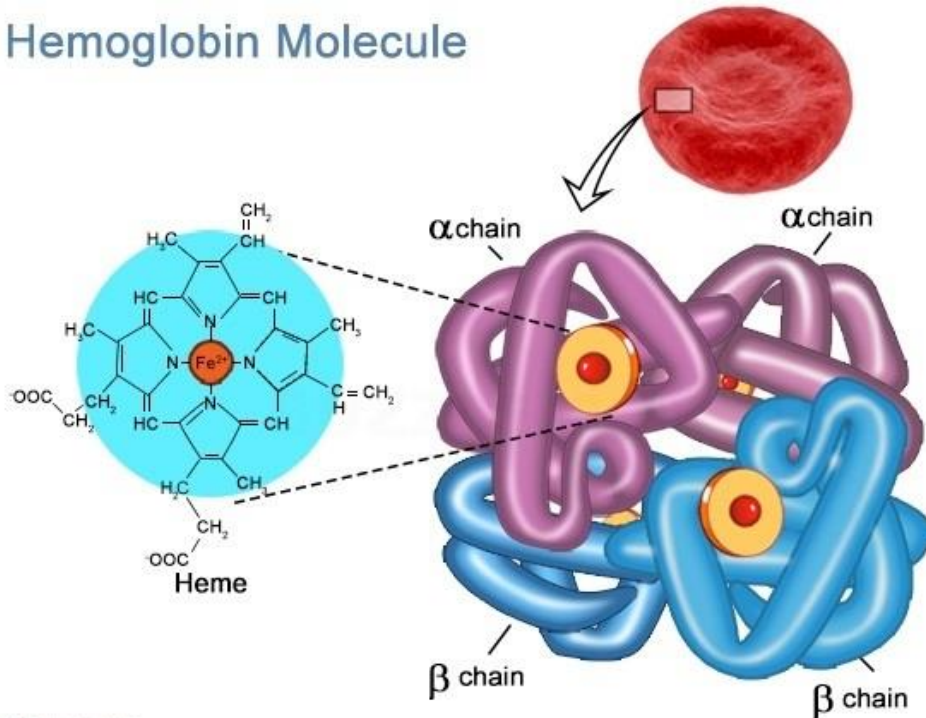
Patiënt met acuut chest syndroom: wat komt er bij kijken om deze patiënt te redden?

Dr. Erik Beckers
Internist-hematoloog/transfusiespecialist
6 december 2018

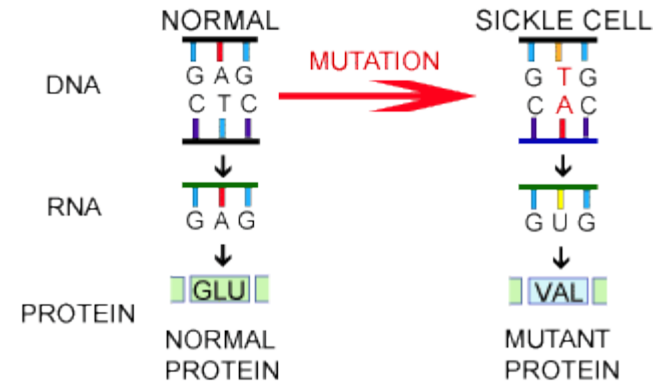
Wat is sikkelcel ziekte?

= afwijkend Hb molecuul

Hemoglobin Molecule



© Buzzle.com



SICKLE CELL DISEASE

(number of people affected)

100,000 people in the U.S.

and **millions** of people worldwide

1 500

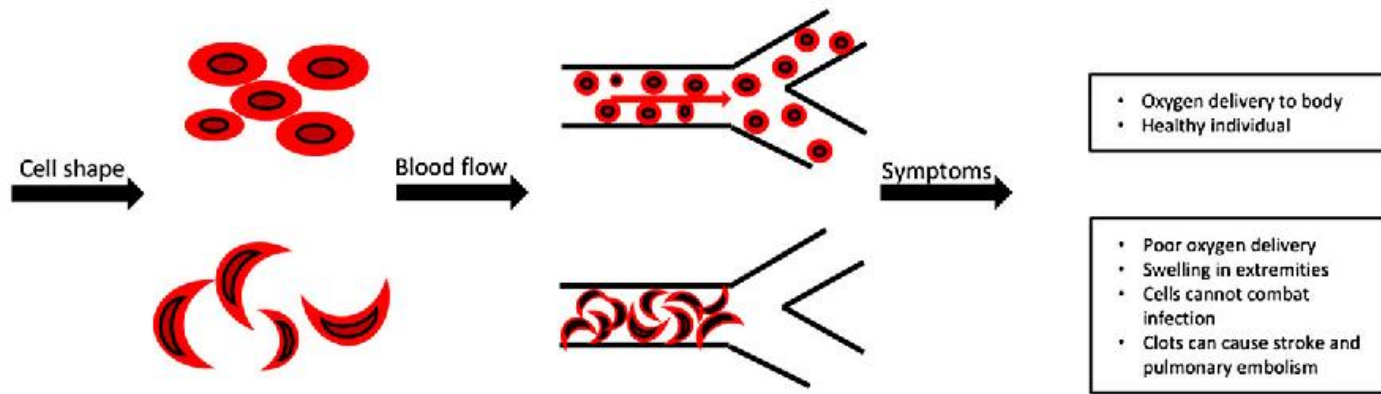
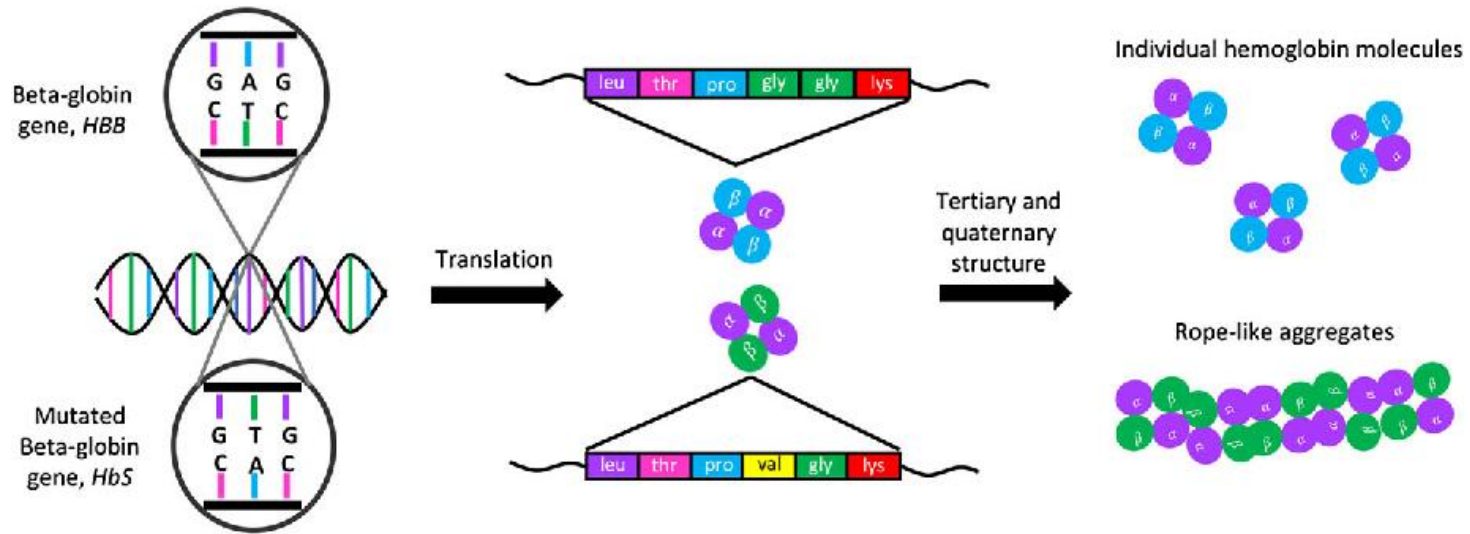
in African American births

1 36,000

in Hispanic births

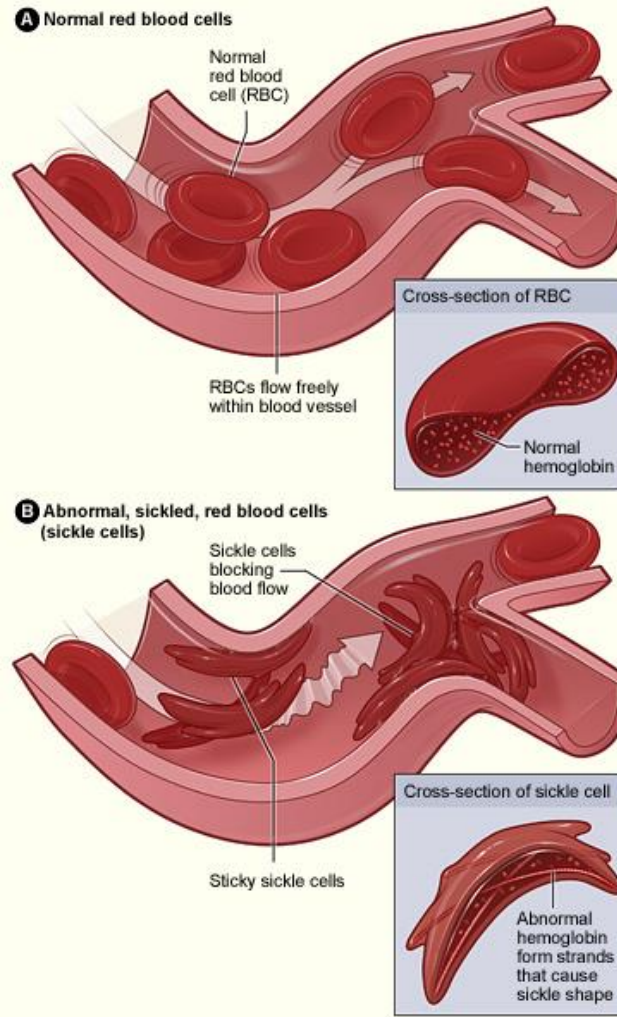
Wat is sikkelcel ziekte?

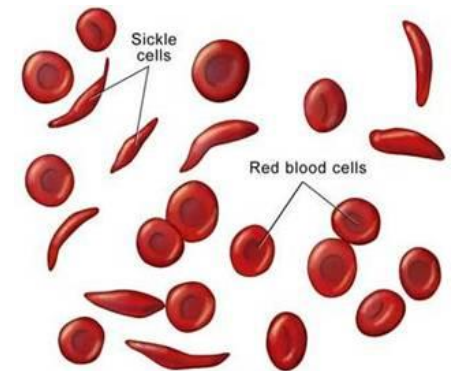
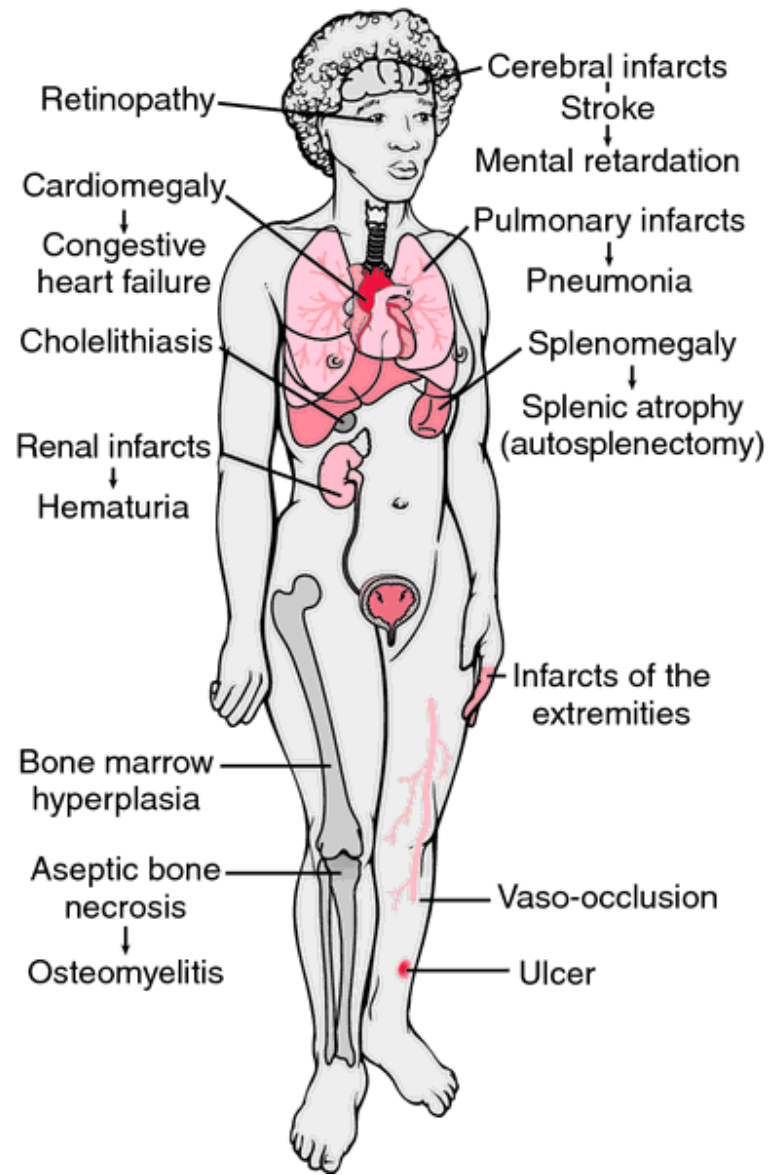
= afwijkend Hb molecuul



Wat is sikkelcel ziekte?

= afwijkend Hb molecuul





Casus

20 jarige jongeman

Homozygote SCD

2-3x per jaar opname ivm pijnlijke crise

13/5: SEH bezoek ivm pijnlijke crise; onderrug en knieën
Pijnstilling en ruim infuus



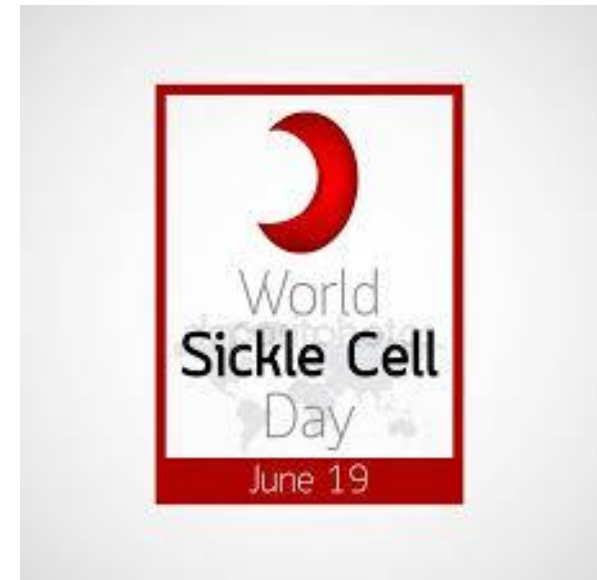
Casus, vervolg

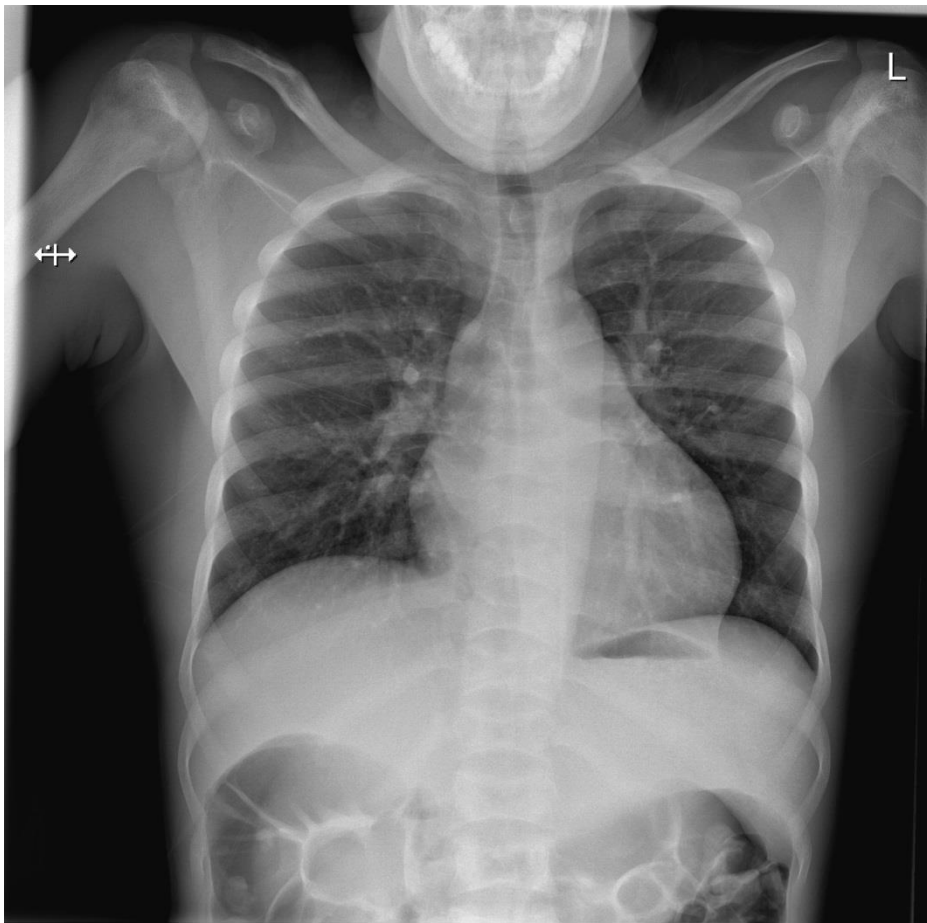
13/5:

In de loop van de avond

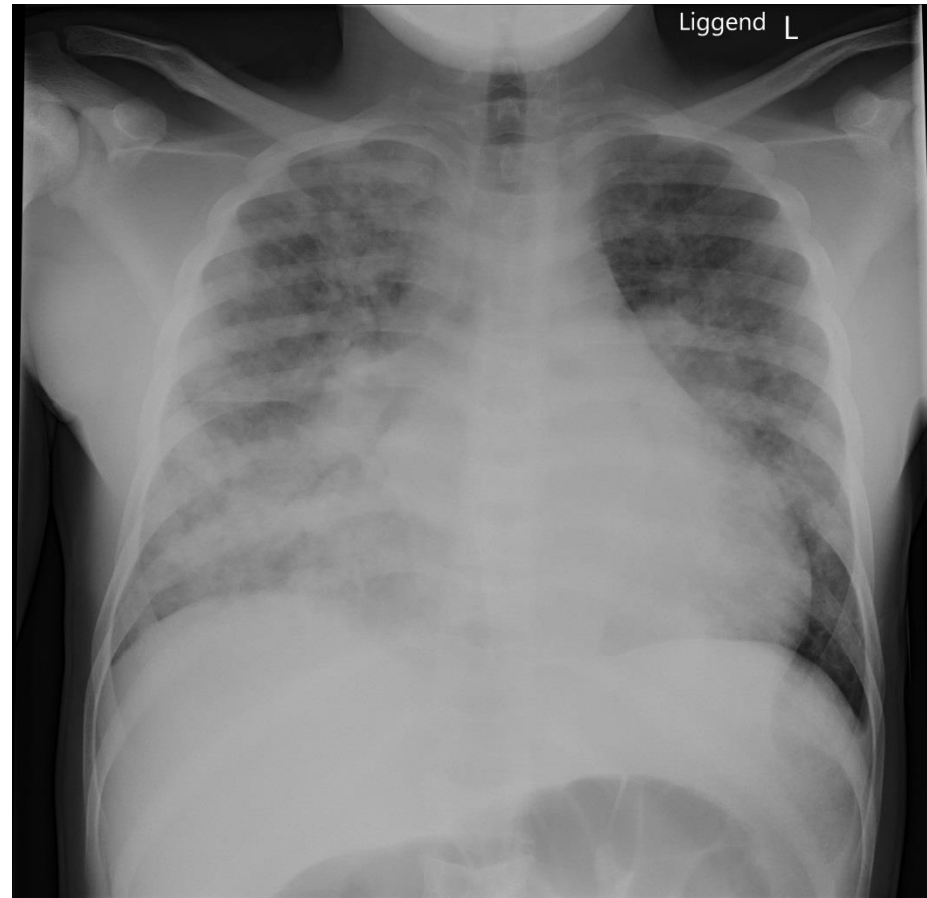
Meer pijn, onrust

Optreden van kortademigheidsklachten

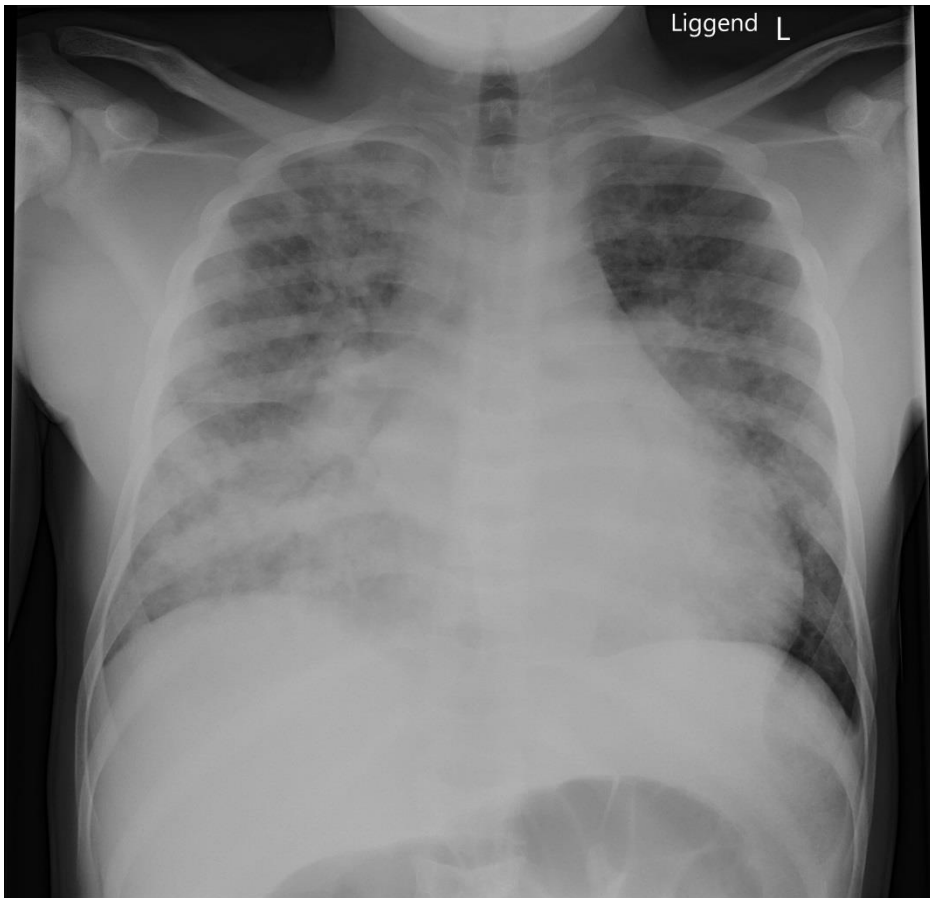




Opname zondag 13/5/18 15.00u

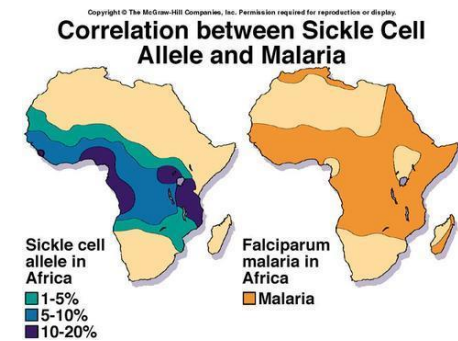


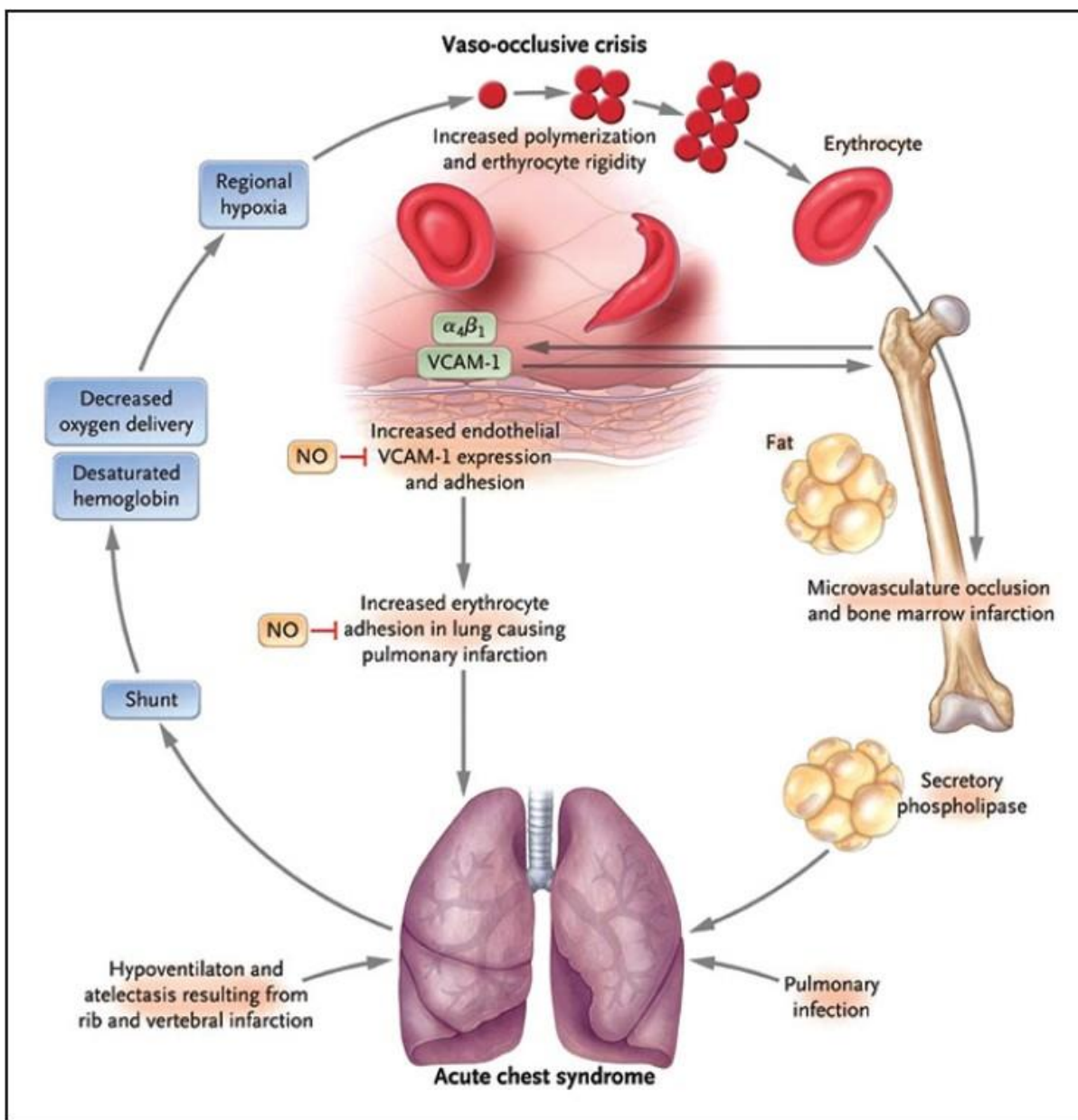
**Afdeling zondag
13/5/18 23.41u**



Acute chest syndrome

Afdeling zondag
13/5/18 23.41u





Acute chest syndrome

Start antibiotica

Indicatie voor RBC exchange procedure

Defective red cells removed

Blood warmer

Blood pumps



Donor red cells infused

Logistiek Aanvraag RBC Exchange

Via Transfusie Laboratorium

Overleg met UTG Sanquin

Overleg met Sanquin Aferese team: uit Rotterdam

Bestellen uitgetypeerde eenheden: uit Nijmegen en Amsterdam



Bloedgroep:

A, ccDee

K -; Fy(a-,b-); Jk(a+, b-);

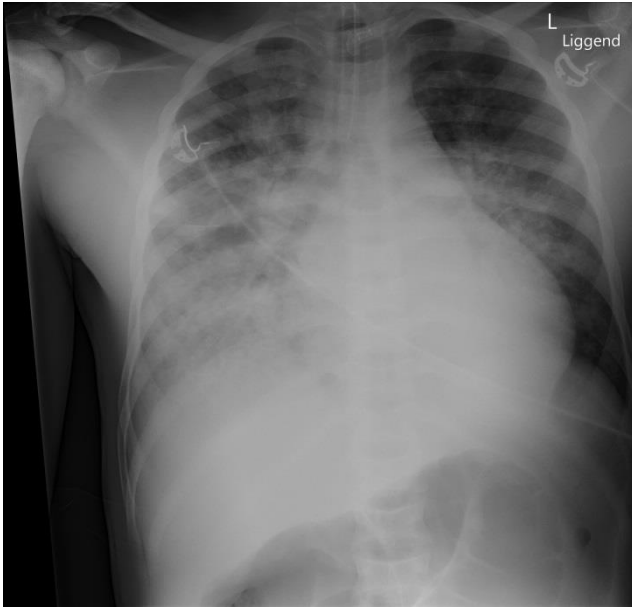
NNss

Eenheden: parvoB-veilig

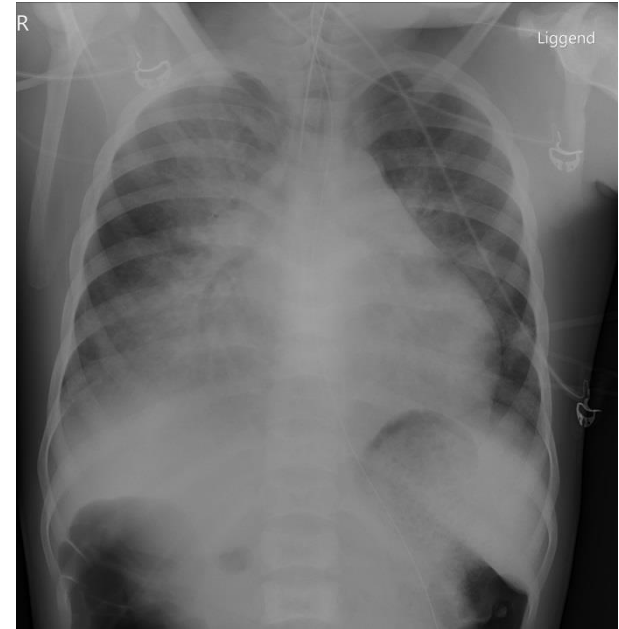
A/0, ccddee = 15%

K-, Fya-, Jkb-, (S-) = 8% (4%)

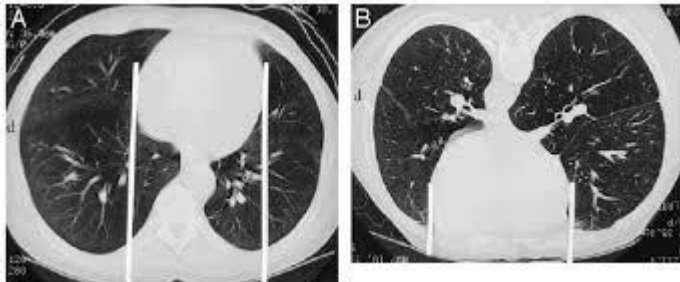
Door lab uitgeleverd: 04u41



ICU maandag 14/5/18 0.54u



ICU maandag 14/5/18 9.17u



Buikbeademing

Casus, vervolg

21 jarige jongeman

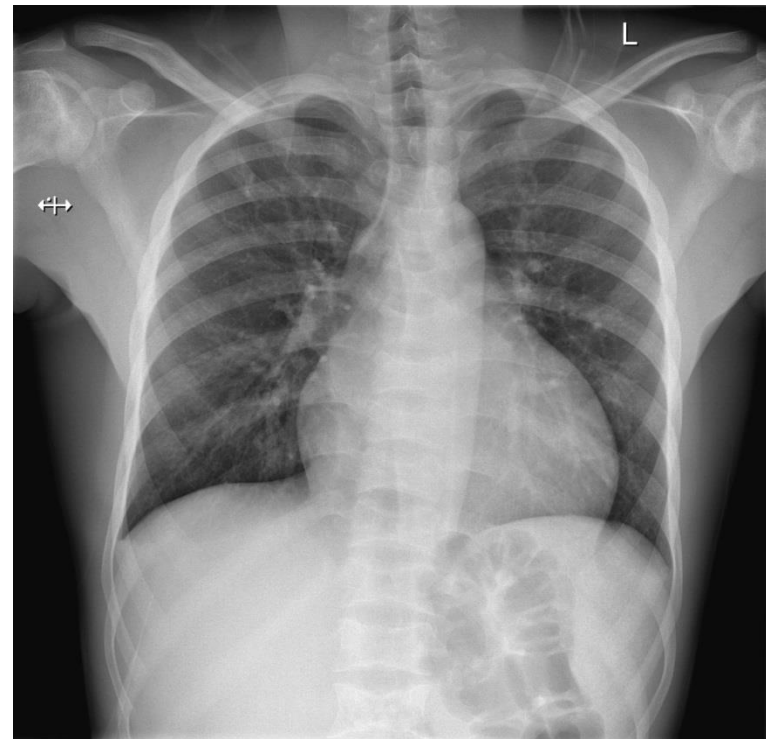
Homozygote SCD

Na RBC-exchange: vlot herstel

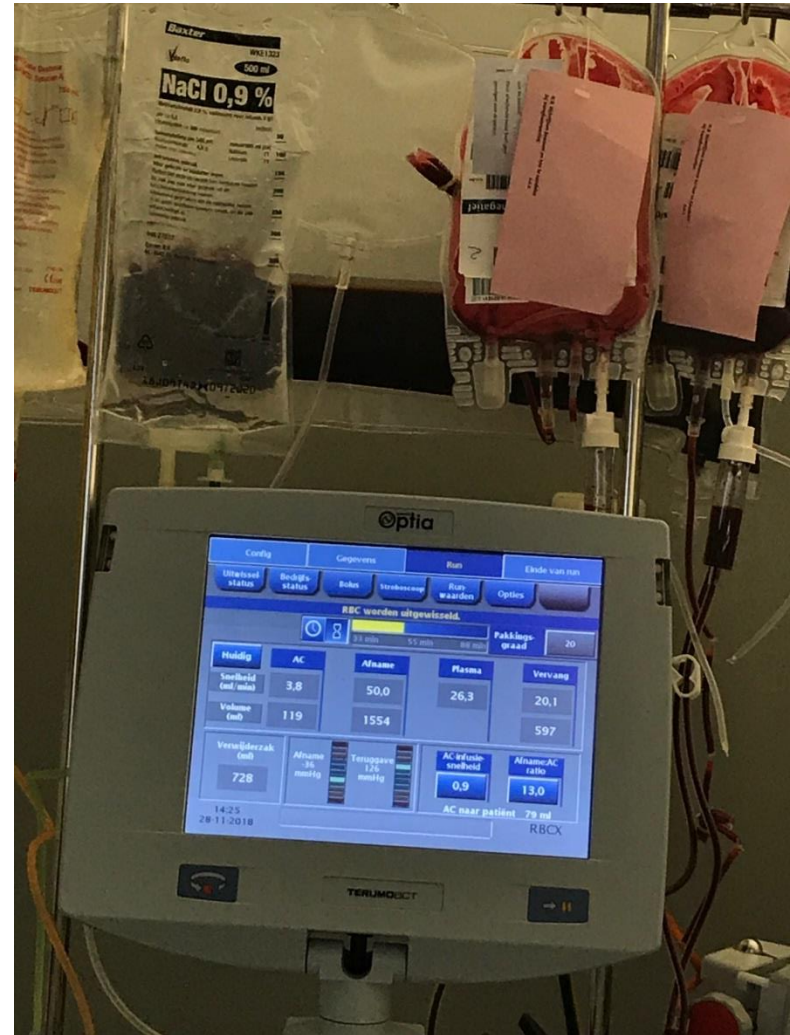
Paar uur later detubatie

1 dag later ontslag ICU

SEH
8 november 2018
crise



Vervolg RBC exchange: preventie acute chest syndrome





Internet afbeelding; NIET pt die is besproken

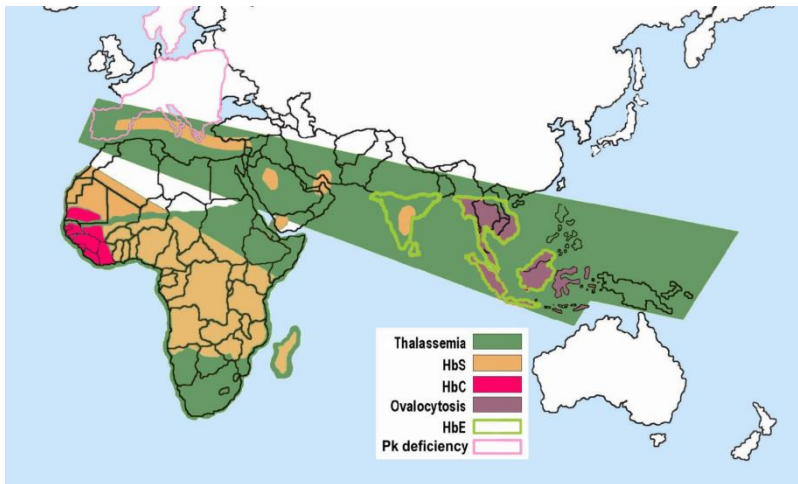
Conclusie

Casus met noodzaak voor acute interventie

Nachtelijke RBC-exchange procedure

Samenwerking: artsen-verpleegkundigen- analisten -

Sanquin UTG/uitgifte - aferese team -
chauffeurs.



GET SCREENED FOR SICKLE CELL TRAIT

KNOW YOUR STATUS.

Did you know there's more than one way to inherit Sickle Cell Disease?

If you don't have a health care provider, visit our Sickle Cell Disease National Resource Directory at www.cdc.gov/ncbddd/sicklecell



TYPES

There are several types of Sickle Cell Disease (SCD) - inherited

